

LANDING FORTYTWO

THE LEADENHALL BUILDING
LONDON



A PRIVATE VENUE IN RICHARD
ROGERS' AWARD-WINNING
POSTMODERN SKYSCRAPER.
CLOSED TO THE PUBLIC, THE
SPACE IS A BESPOKE OFFERING
WITH ONE-OFF VIEWS TO THE
FAR EDGES OF LONDON

Landing Forty-Two occupies the entire forty-second floor of
The Leadenhall Building in the City of London. At over 500 ft,
above street level, it is the highest event space in the UK.

42



PRIVATE EVENTS IN THE SKY

Available for private use - celebrations, brand launches, conferences and more - by invitation only. The venue is defined by clean architectural lines and a cool, minimal aesthetic, and can accommodate up to 300 people.







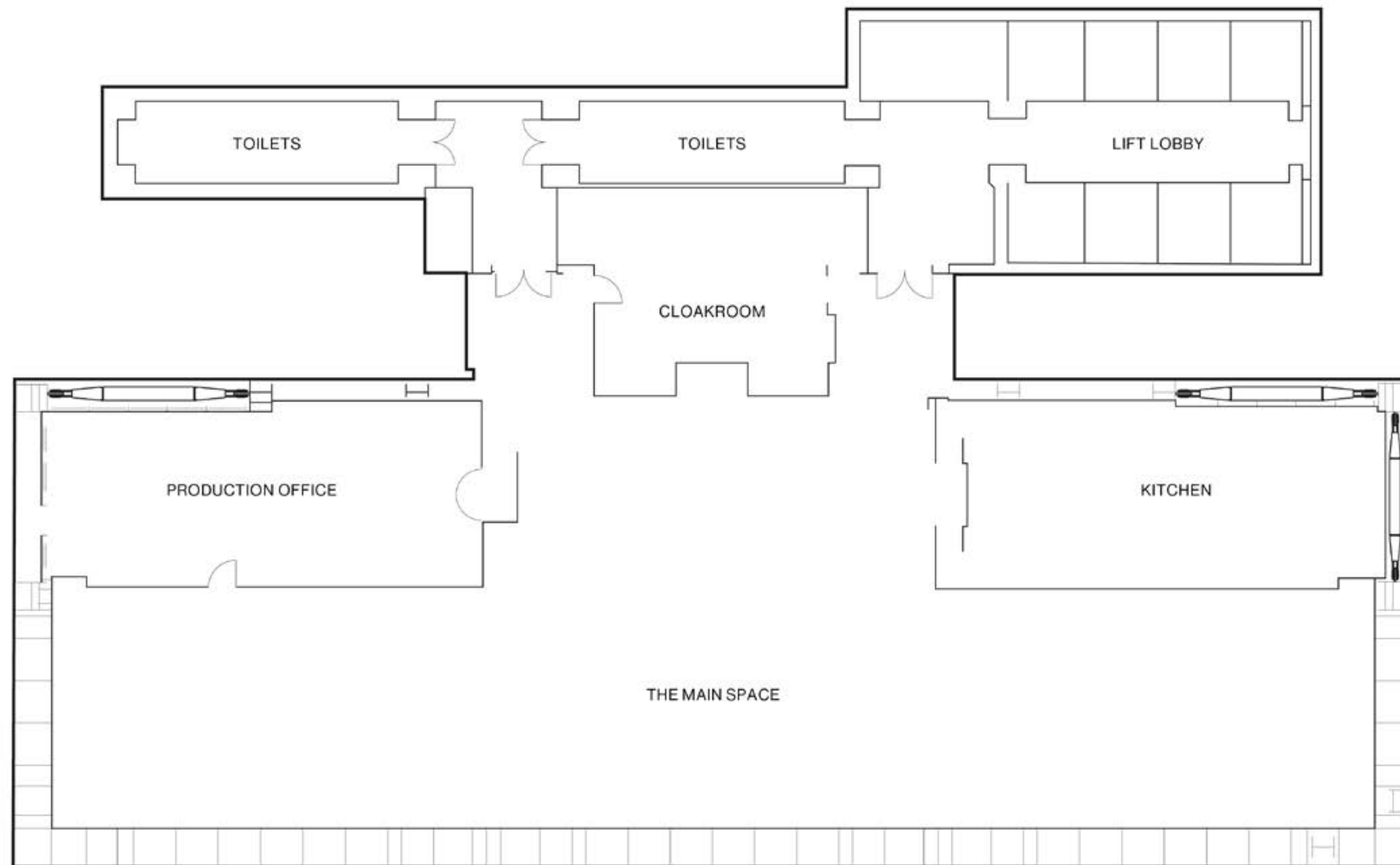
A NEW PERSPECTIVE ON LONDON (BY INVITATION ONLY)

The Leadenhall Building, or 'Cheesegrater' is considered the late masterpiece of the British architect Richard Rogers. Its tapering profile was designed to preserve views of St Paul's Cathedral, which means access to the highest floors is extremely limited.

The 'inside-out' steel structure of the building provides an uninterrupted architectural canvas for custom-built floorplans and bespoke events.



THE SPACE



The space offers over 5,000 sq ft of flexible space for conferences, product launches, receptions and dinners for up to 300 delegates or guests.

Landing Forty Two has been fitted out with the very latest lighting and sound installation and has triple-aspect, floor-to-ceiling glazing, offering stunning views of London's skyline.

LONDON'S PRIVATE EYE



Landing Forty Two is one of London's most flexible and awe-inspiring event spaces for events.

The stunning views are the perfect inspiration for blue sky thinking and the automated blinds can be lowered to maximise focus during presentations, screenings, dinners and more.





SPECIFICATIONS

SIZE (FT)	500
L (FT)	153.8
W (FT)	25.6
H (FT)	8.2
STANDING CAPACITY	300
THEATRE CAPACITY	250
DINNER CAPACITY	220
CABARET CAPACITY	152

LOCATION

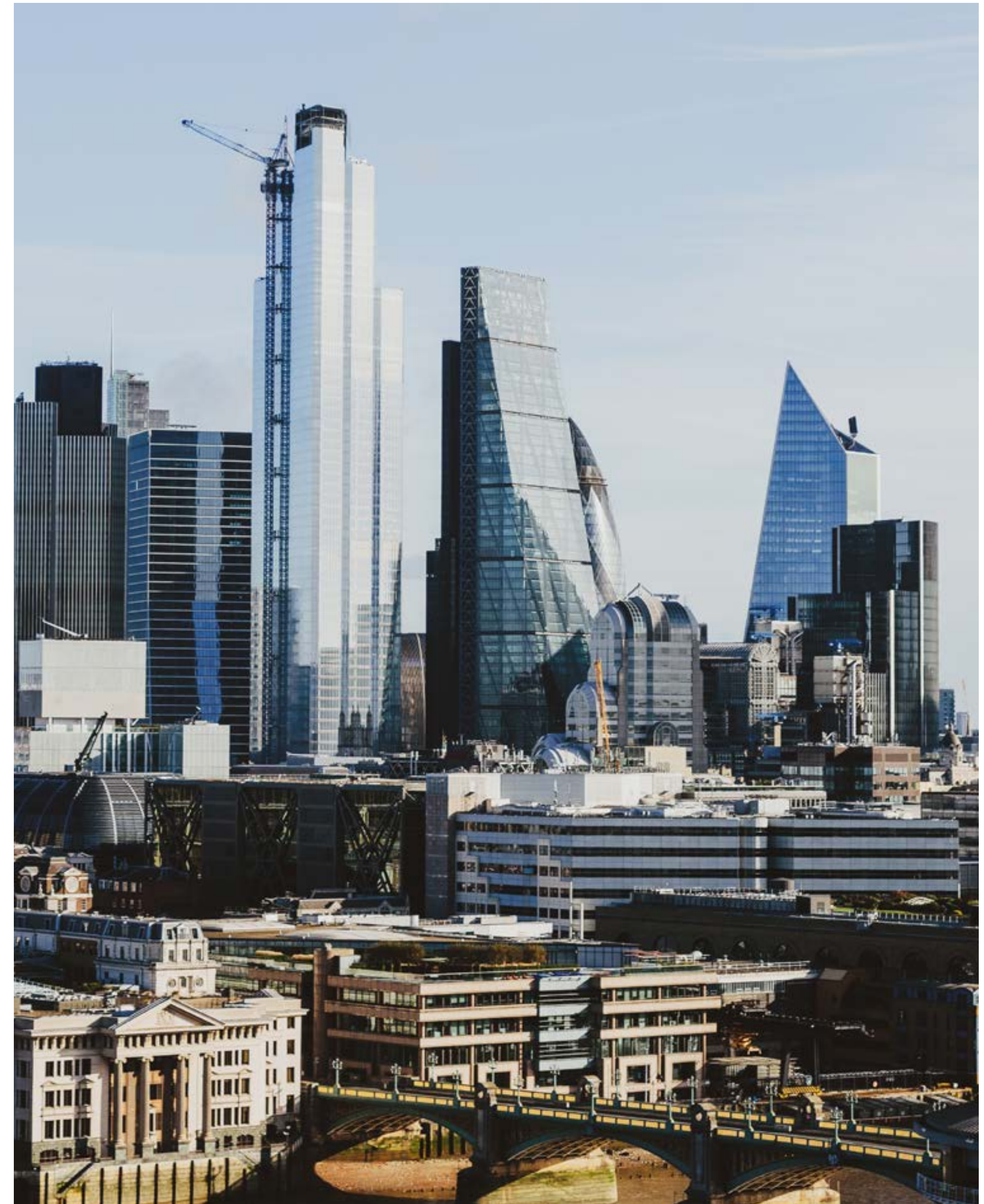
Landing Forty Two, The Leadenhall Building, 122 Leadenhall Street, London, EC3V 4AB

Landing Forty Two is located on the 42nd floor of The Leadenhall Building on Leadenhall Street.

Leadenhall Street is situated in the heart of the City and just a few minutes walk from Liverpool Street, Fenchurch Street, Bank and Monument Stations.

Access to the events floor is via the building's glazed external-facing high-speed lifts, which deliver guests to the venue in just over 30 seconds.

The space is easily accessible, five to ten minutes walk from Bank, Monument, Fenchurch Street and Liverpool Street stations.





IN-HOUSE PRODUCTION

Landing Forty Two is equipped with the latest in sound and lighting installations, boasting triple-aspect, floor-to-ceiling glazing that offers exclusive vistas of London's skyline. Our in-house production partners at Vibration Production are virtuosos in event design and execution, specialising in adding flair to extraordinary spaces. Their breadth of

experience in the event industry ensures that each function is not only impactful but also leaves a lasting impression. They offer a comprehensive range of services, from pre-production and design to full show production and management, all designed to augment the unique ambience of Landing Forty Two.



CATERING

Landing Forty Two proudly collaborates with Moving Venue, an acclaimed catering expert with over three and a half decades of expertise in the events sector, and a preferred caterer for over fifty prestigious venues across London. Renowned for their innovative and creatively crafted cuisine, they ensure their offerings are not only exceptional in taste but also perfectly suited to the event environment.

Every dish is meticulously crafted, from the selection of seasonal ingredients to the expert culinary techniques, down to the presentation to guests.

Should clients desire a bespoke catering experience, our dedicated catering manager is available to discuss and fulfil their unique requirements.



VIEWS. BY INVITATION ONLY

Re-define your next event or celebration, call us on +44 (0) 20 8498 4930, email info@landingfortytwo.com

Landing Forty Two, The Leadenhall Building
122 Leadenhall Street London, EC3V 4AB